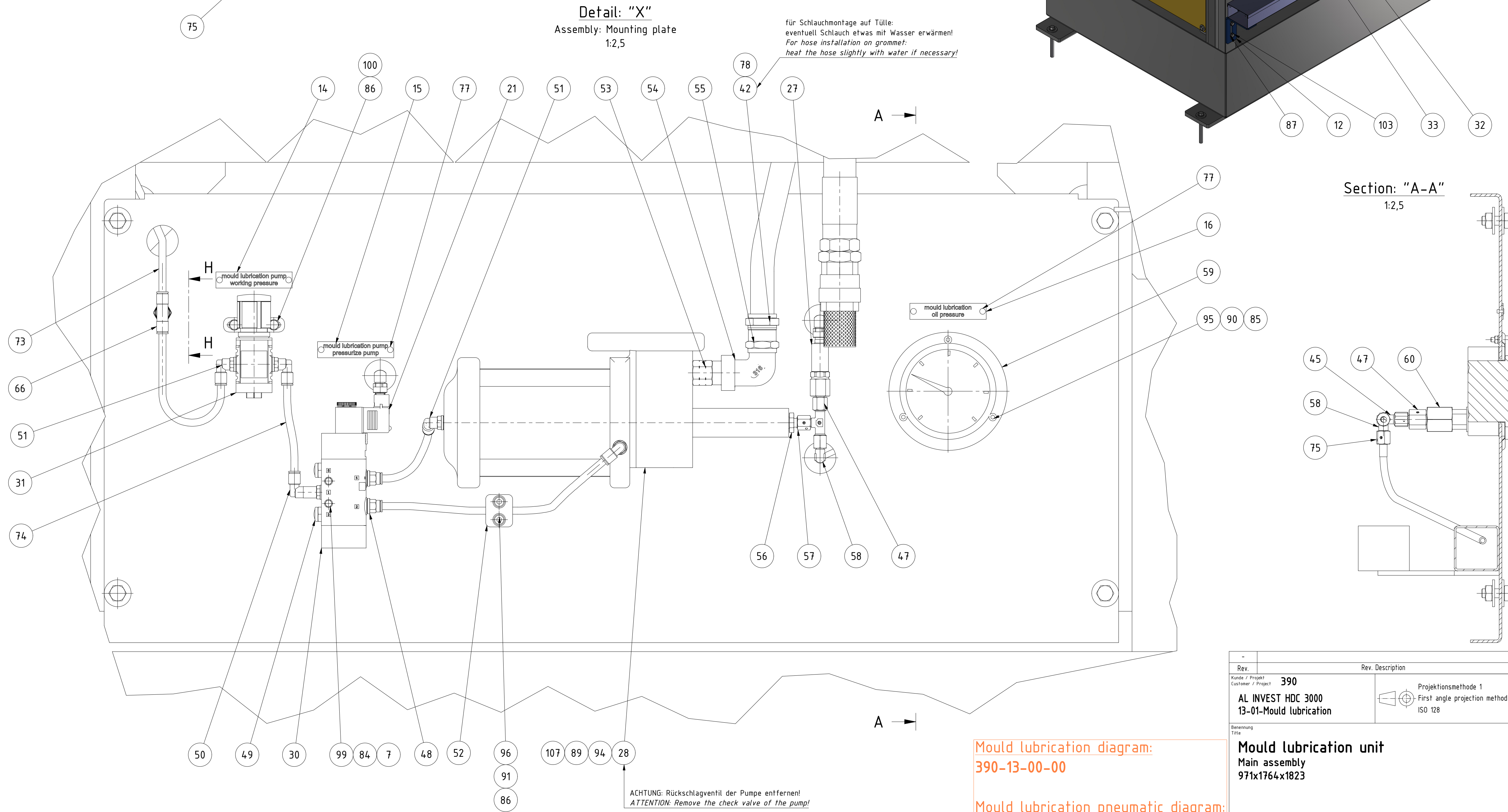
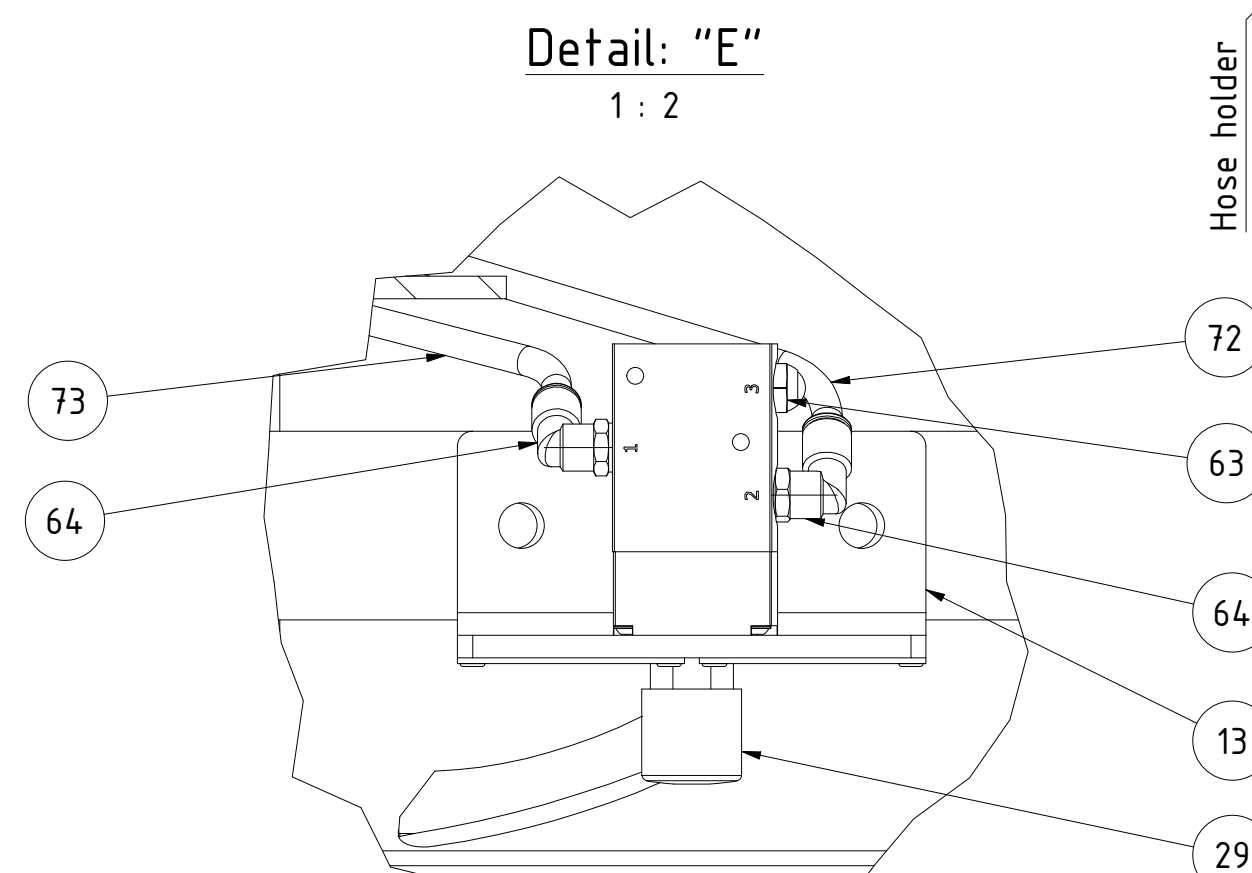
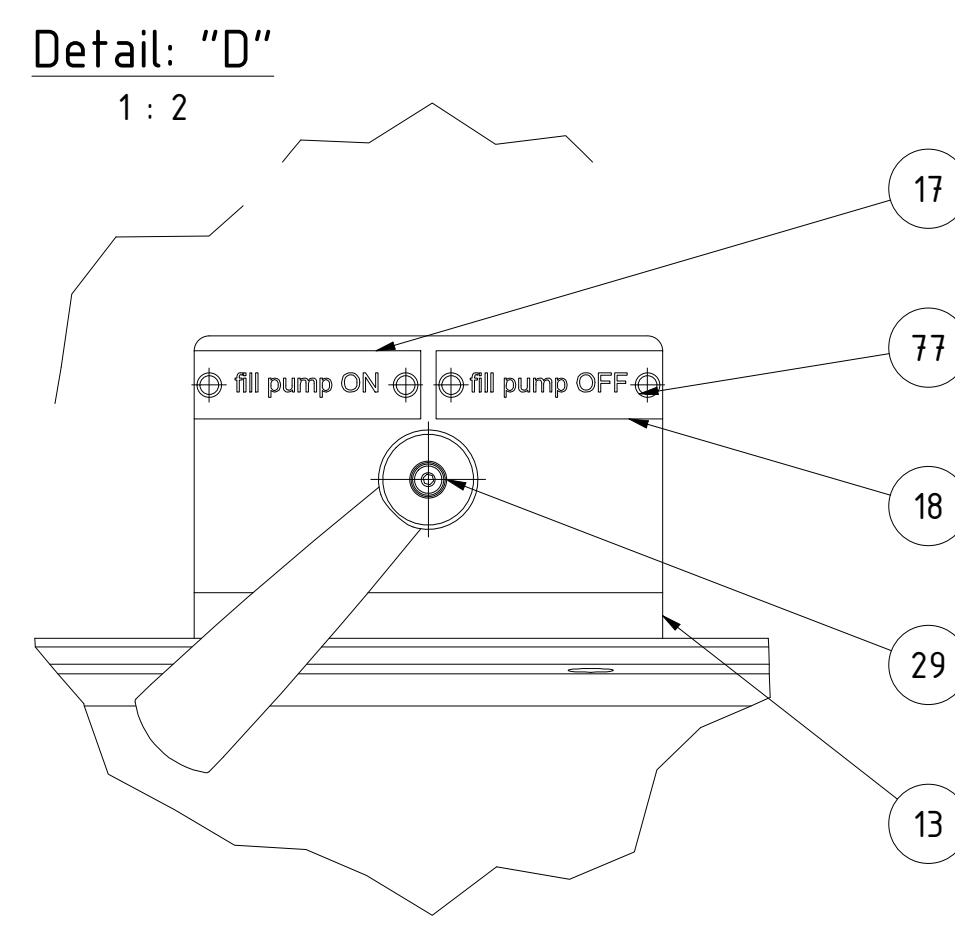
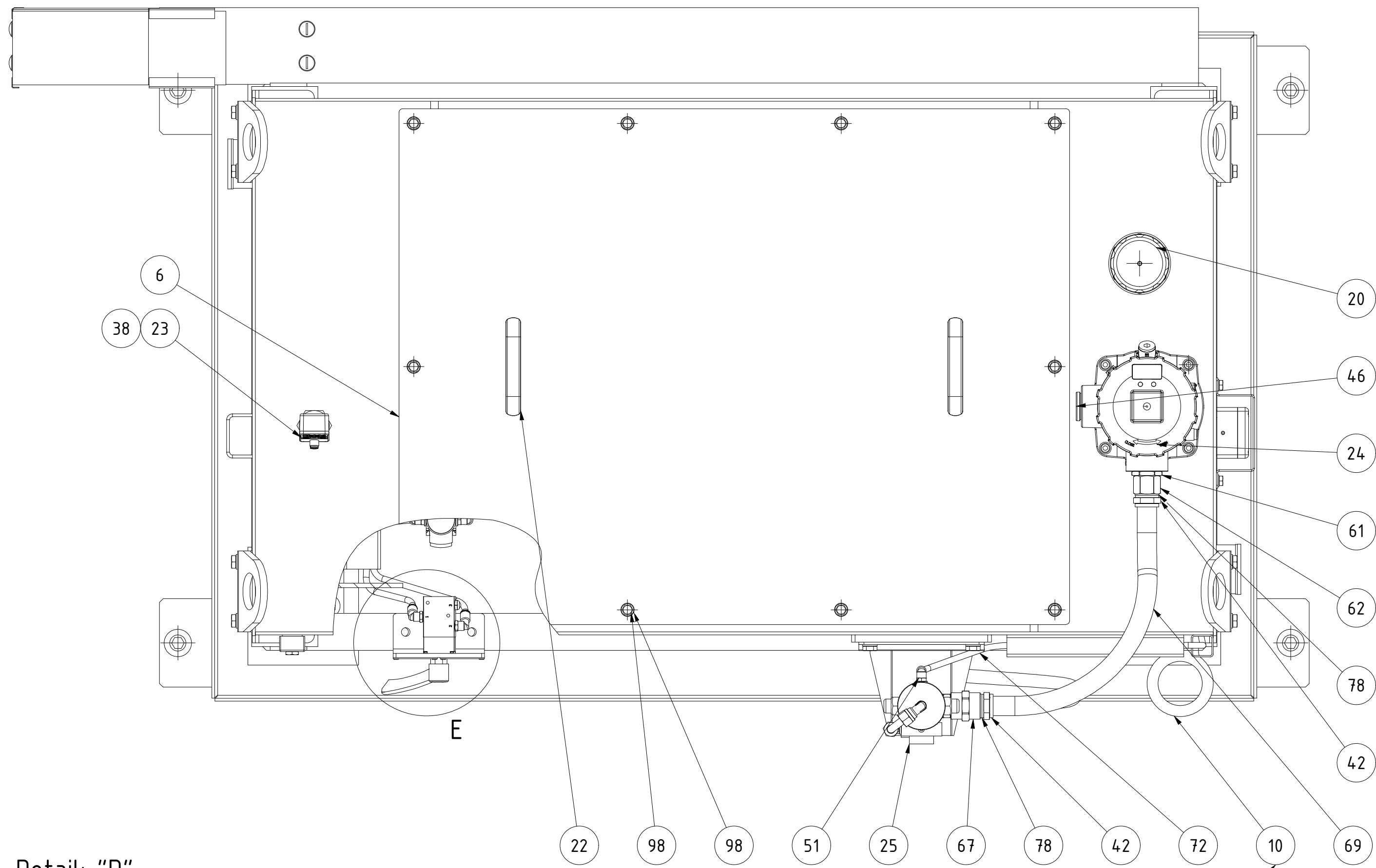
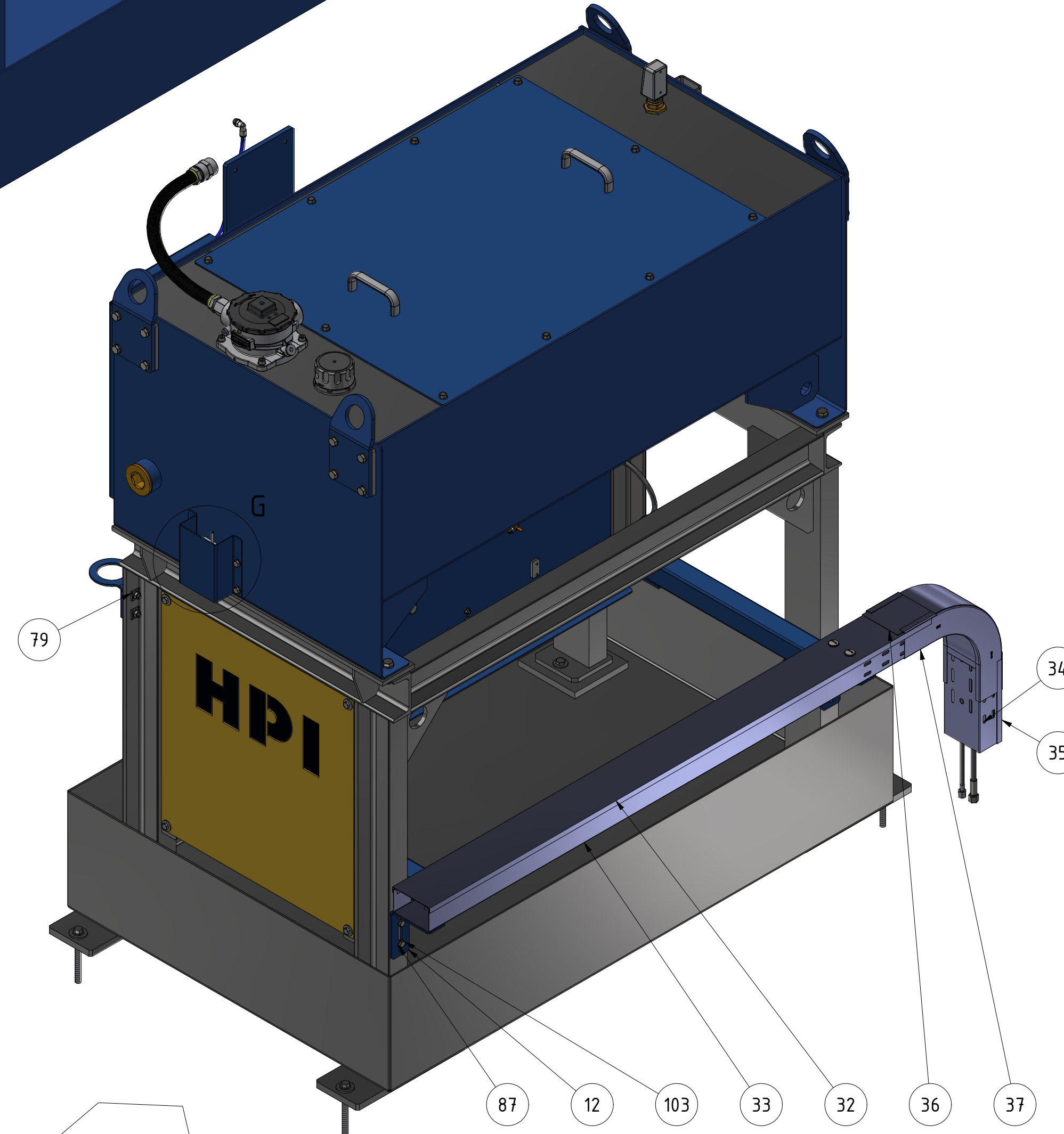
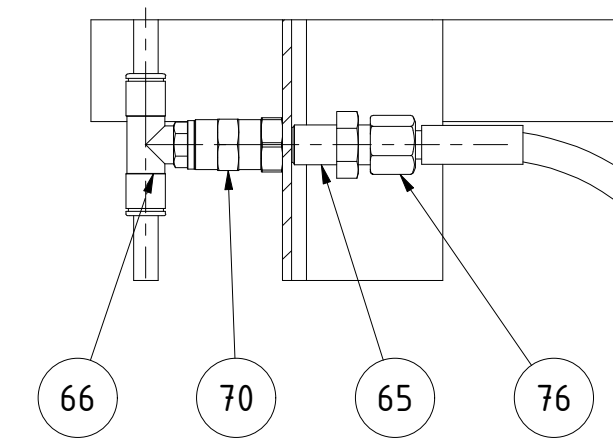
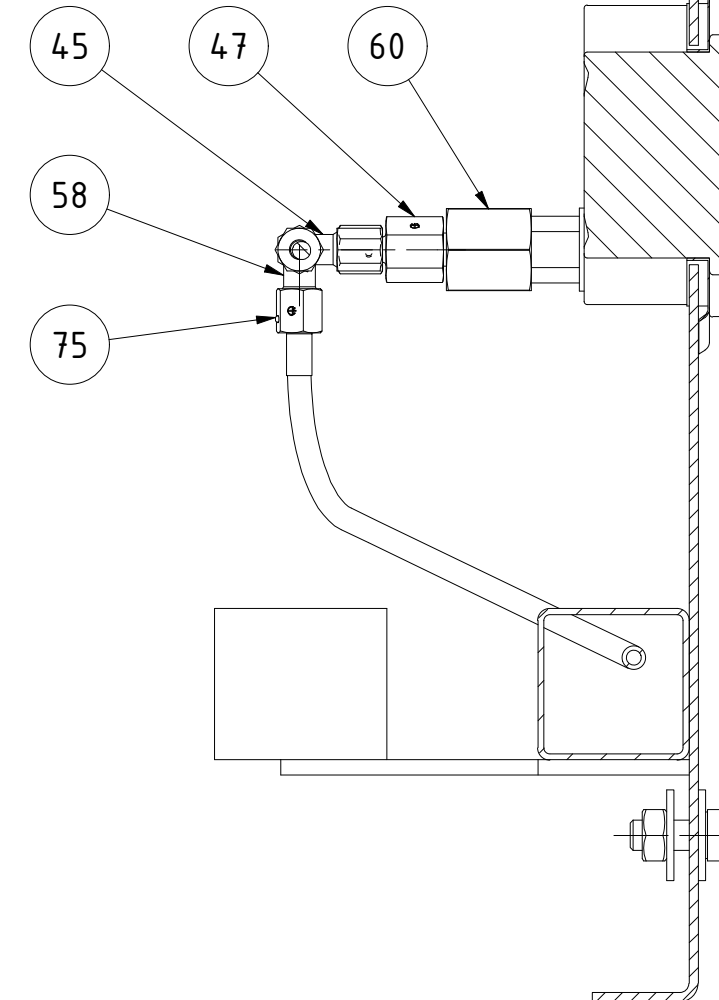


Section: "H-H"  
1:2,5

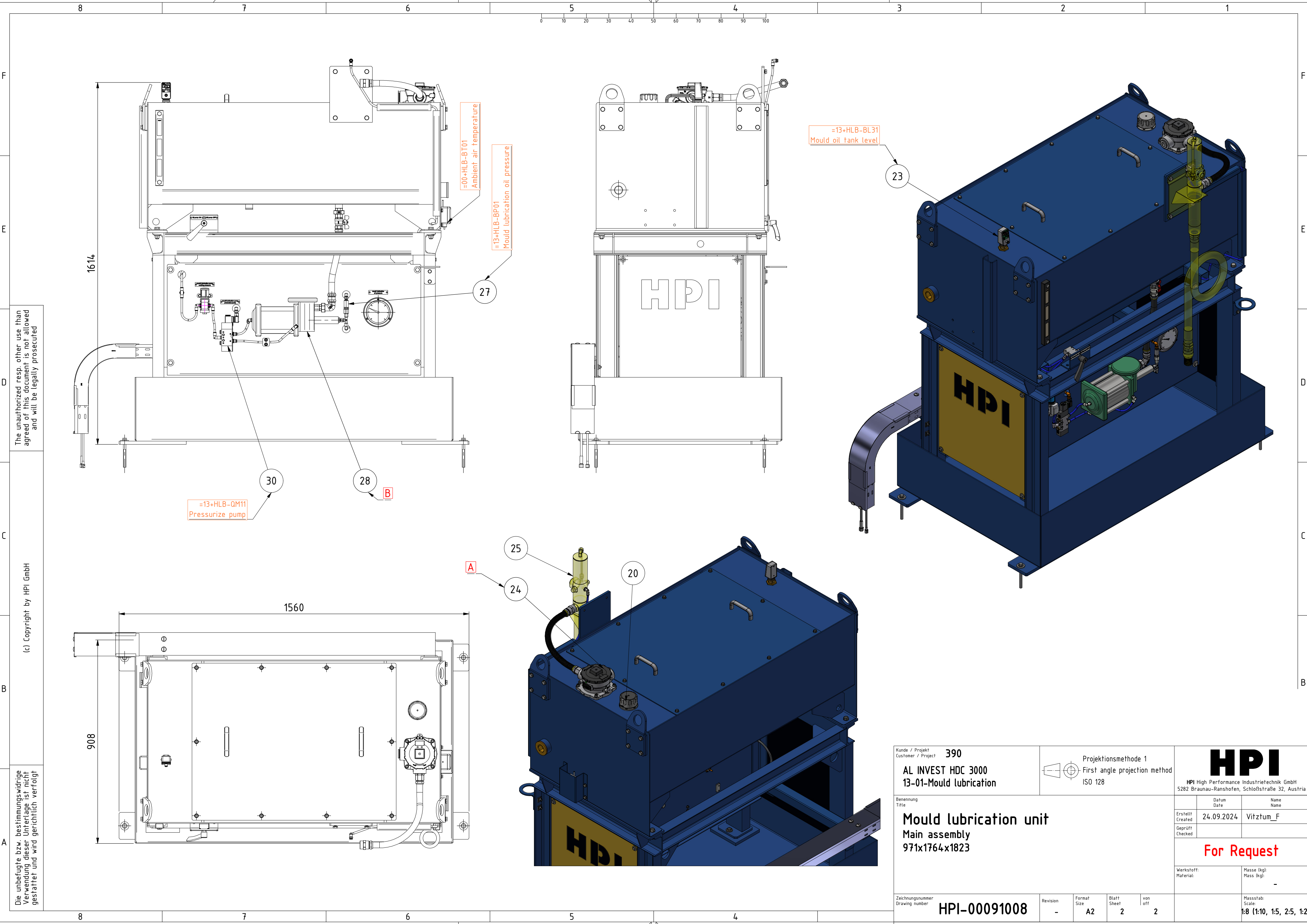


Section: "A-A"  
1:2,5



Rev.	Rev. Description	Date	Name
390	AL INVEST HDC 3000 13-01-Mould lubrication	24.09.2024	Vitzum_F
Mould lubrication unit Main assembly 971x1764x1823		For Request	
HPI-00091008		18 (110, 15, 25, 12)	

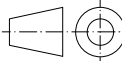





The unauthorized resp. other use than agreed of this document is not allowed and will be legally prosecuted

(c) Copyright by HPI GmbH

Die unbefugte bzw. bestimmungswidrige Verwendung dieser Unterlage ist nicht gestattet und wird gerichtlich verfolgt

Kunde / Projekt Customer / Project		390				Projektionsmethode 1 First angle projection method ISO 128			
		AL INVEST HDC 3000 13-01-Mould lubrication						HPI High Performance Industrietechnik GmbH 5282 Braunau-Ranshofen, Schloßstraße 32, Austria	
Benennung Titel  Mould lubrication unit  Main assembly  971x1764x1823							Datum Date	Name Name	
						Erstellt Created	24.09.2024	Vitztum_F	
						Geprüft Checked			
						For Request			
						Werkstoff: Material:		Masse (kg): Mass (kg):  -	
Zeichnungsnummer Drawing number		HPI-00091008		Revision	-	Format Size	A2	Blatt Sheet	2
							von off	2	
								Massstab: Scale: 1:8 (1:10, 1:5, 2:5, 1:2)	